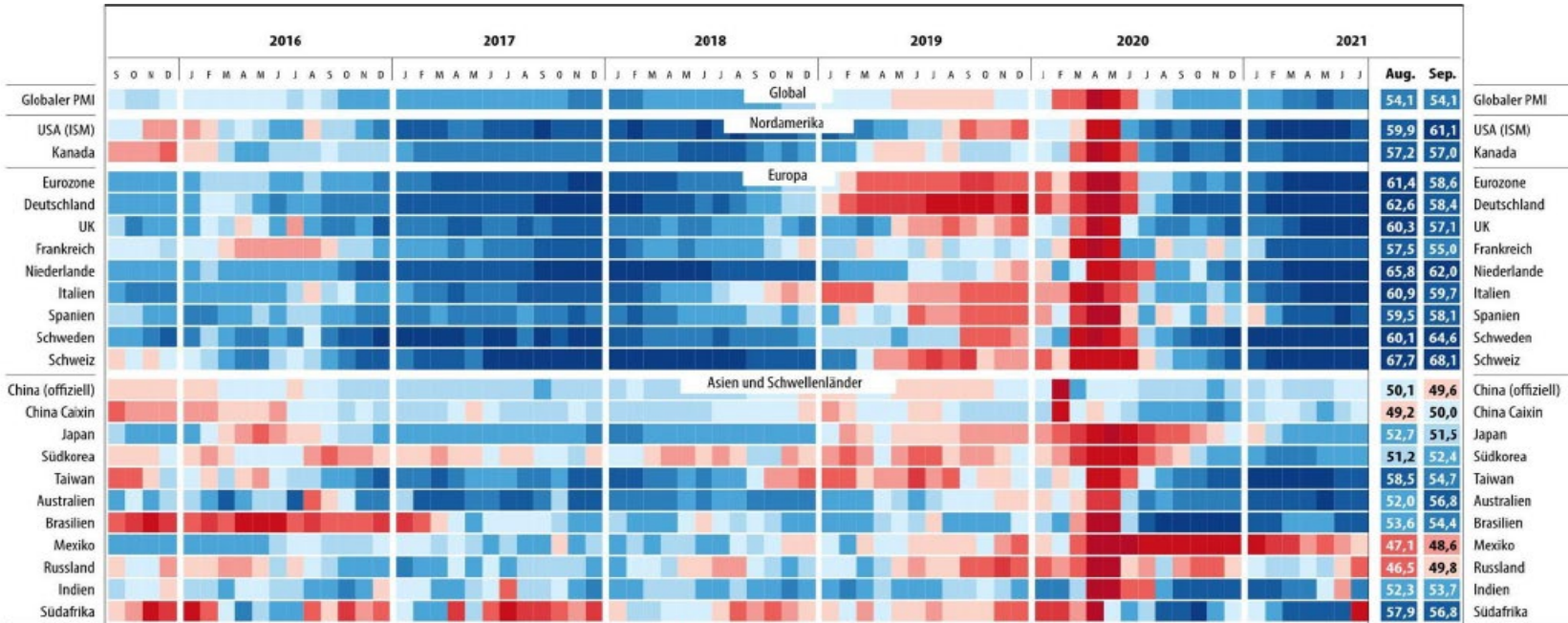


Current situation of the Swiss mechanical and electrical engineering industries (MEM industries)

Monatliche Einkaufsmanagerindizes (PMI) der Industrie

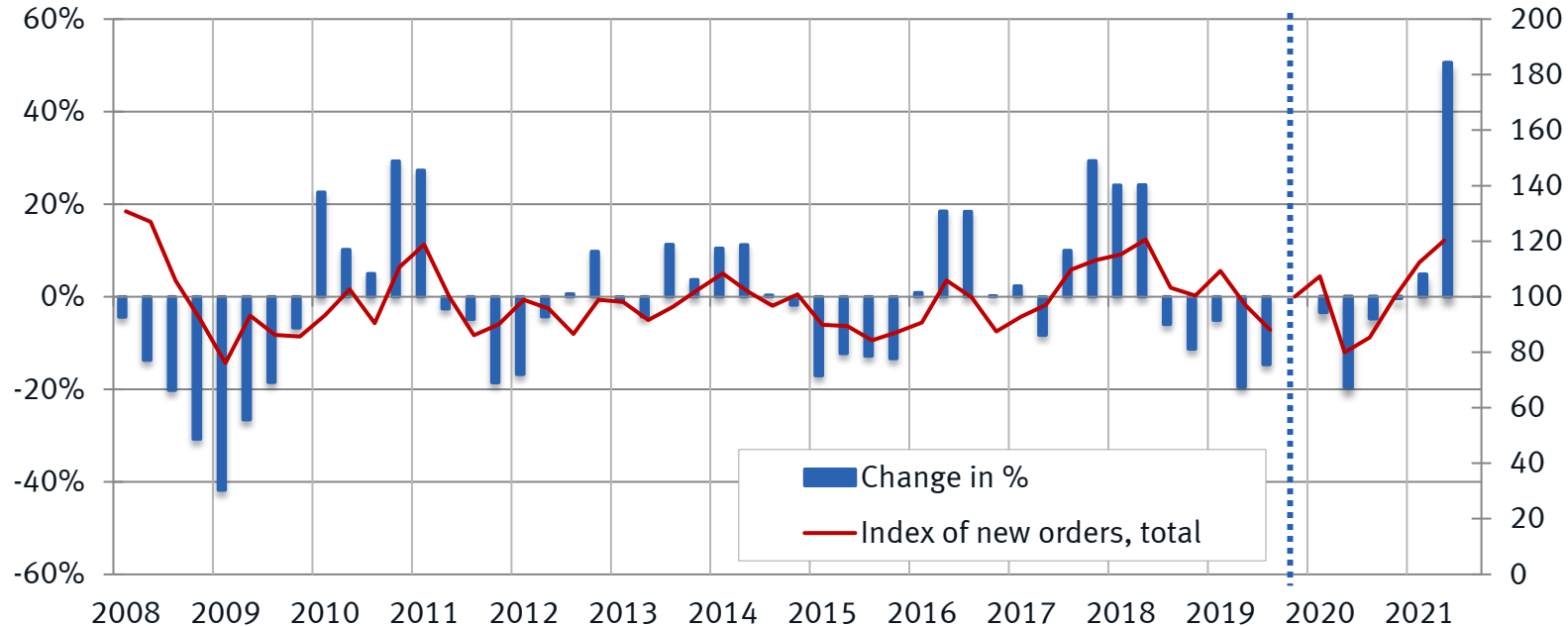


New orders received by the MEM industries

H12021: 24.4%

Q2/2021: 50.6%

Swissmem quarterly statistics (Q4/2019=100)*



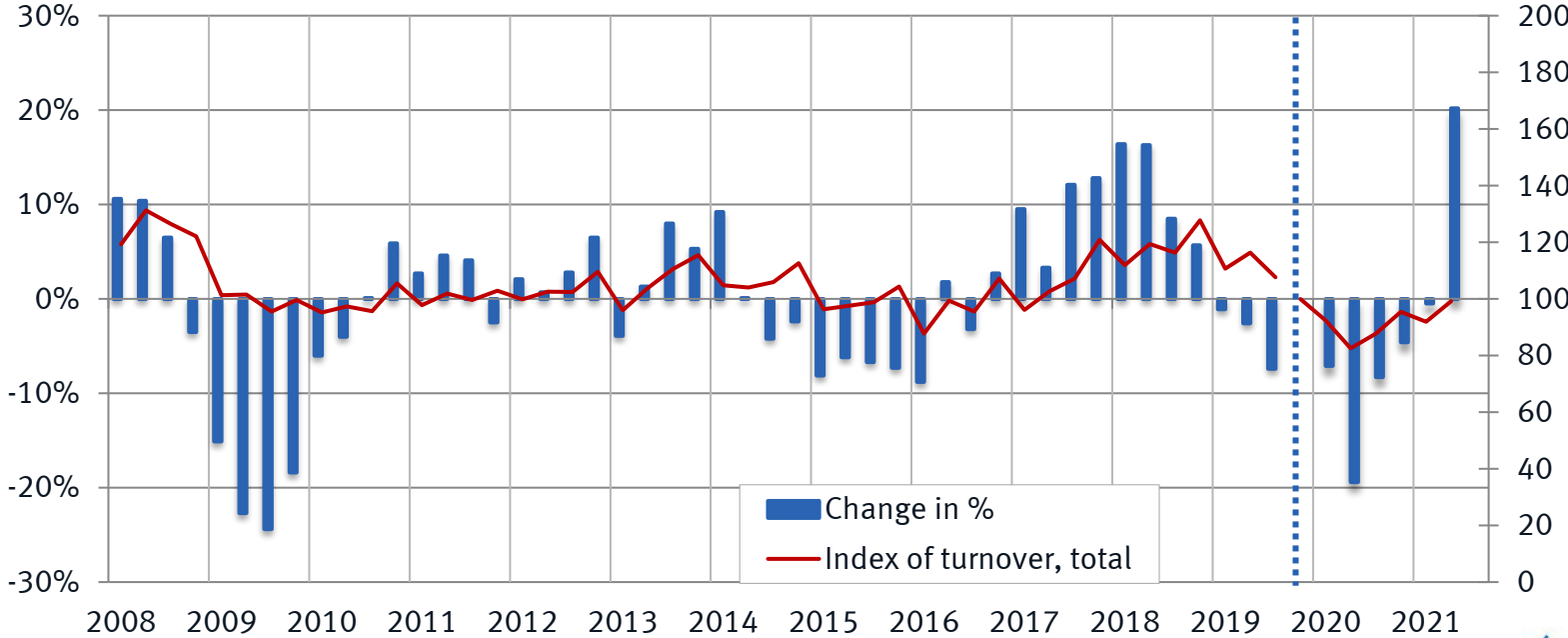
* Swissmem quarterly statistics. New basis Q4/2019 = 100 (N = 257 companies). The index series and rates of change for the period 4/2019 to Q1/2021 have been recalculated.

Turnover of the MEM industries

H1/2021: 9.3%

Q2/2021: 20.2%

Swissmem quarterly statistics (Q4/2019=100) *



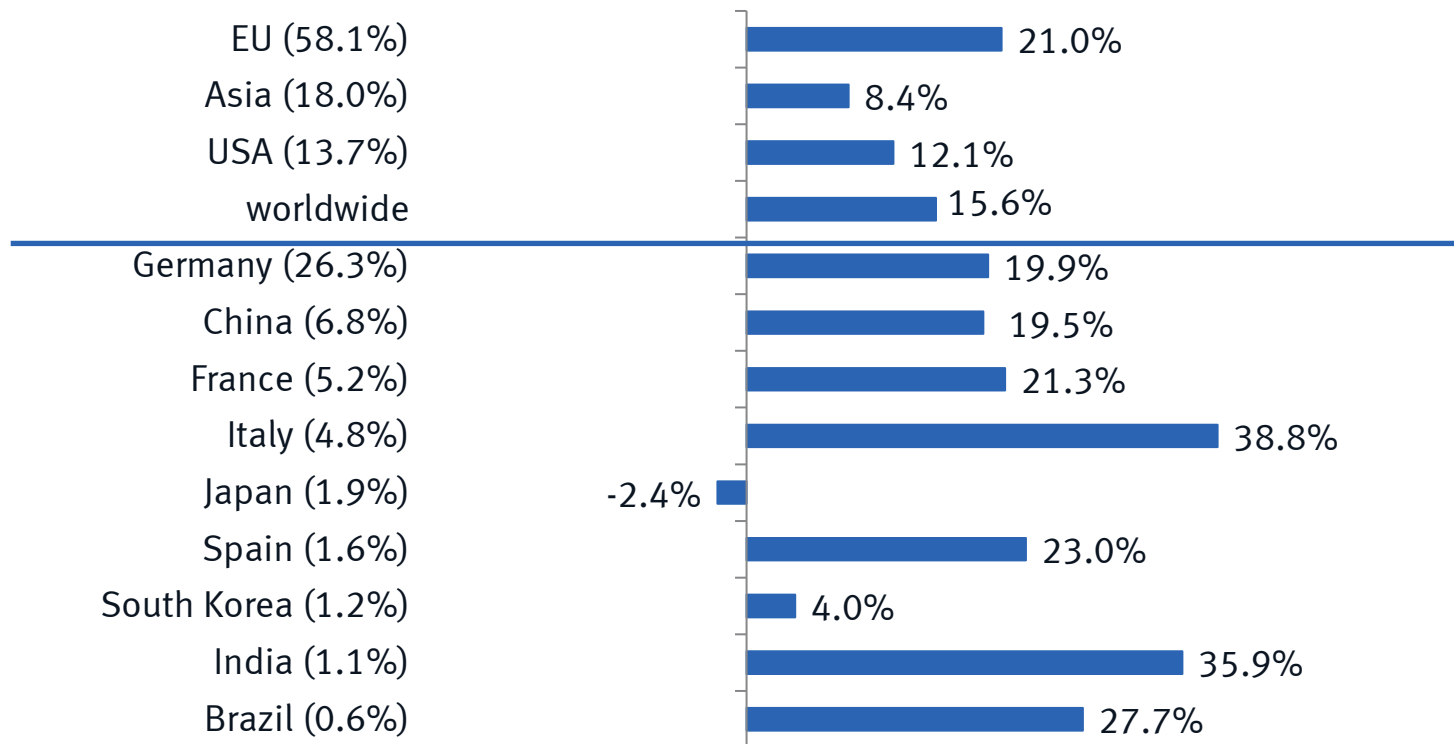
* Swissmem quarterly statistics. New basis Q4/2019 = 100 (N = 257 companies). The index series and rates of change for the period 4/2019 to Q1/2021 have been recalculated.



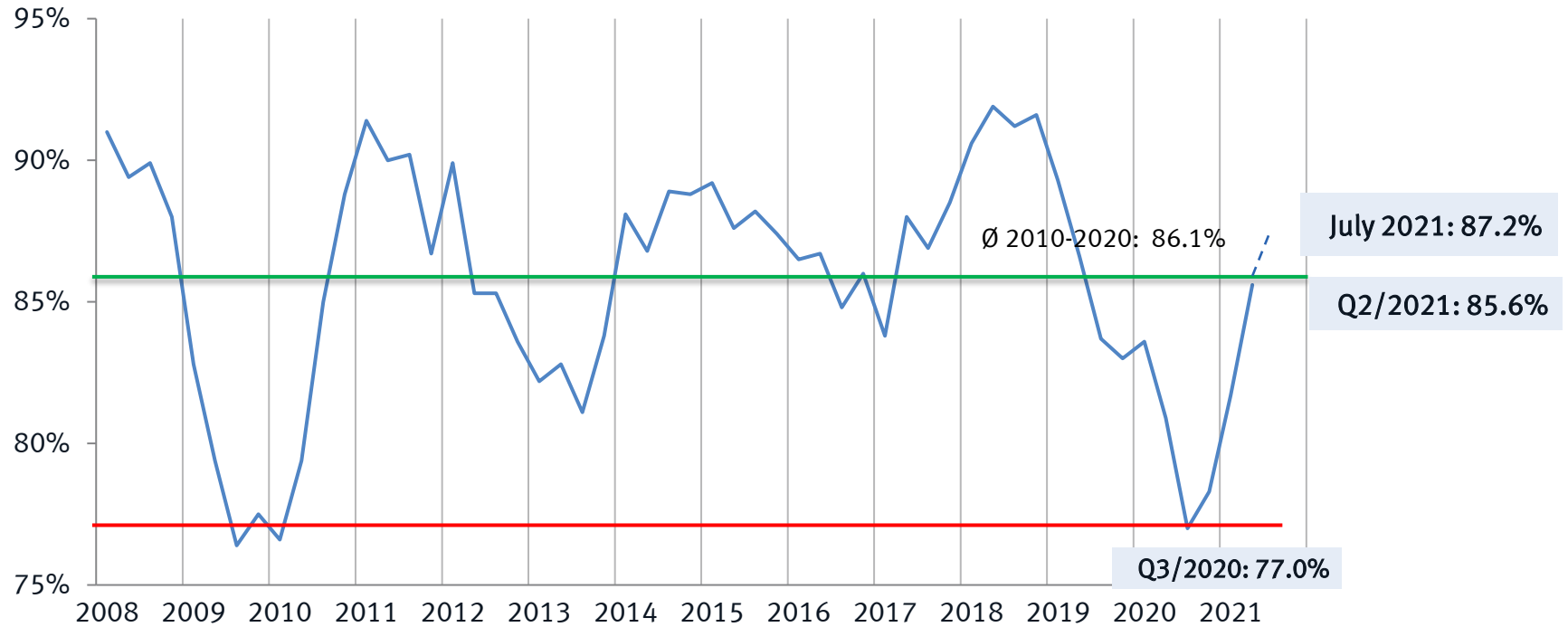
Exports of the MEM industries Jan. to June 2021

Share of total MEM exports

Change in % over previous year



Capacity utilization of the MEM industries



Workforce in the MEM industries

(Full-time and part-time; as at August 2021)

Year	Employees	Δ in % versus previous year
2004	309.800	- 1.4
2008	350.400	3.6
2009	336.800	- 3.9
2010	329.100	- 2.3
2015	325.700	- 1.3
2016	317.500	- 2.5
2017	312.300	- 1.6
2018	318.800	2.1
2019	323.400	1.4

	2019	2020	Δ in % to same quarter of previous year
Q1	322'800	313'500	-2,9
Q2	319'600	313'600	-1,9

The sampling method used for compiling the employment statistics was modified in Q2 2020. According to the FSO, the time series for the period 2018-2020 has been adjusted accordingly.

Source: Besta statistics (FSO); Swissmem calculations
Annual values: average of all four quarters – rounded to the nearest 100